

YW-4500 Q

WALL MOUNT ANTENNA



The wireless antenna YW-4500 Q has been designed for our UHF band wireless systems with a frequency range of 506 - 542 MHz. Cable loss can be compensated for by a built-in RF signal booster. The YW-4500 Q is a dipole antenna designed to be installed indoors. Use coaxial cable with a 75 Ω impedance. When ordering the YW-4500 Q, use matching receiver models WT-58xx, our WTU-4800 tuner packs, or our WTU-M9800 900 series mixer module with the suffixes RM1 or M1 US.

Key features

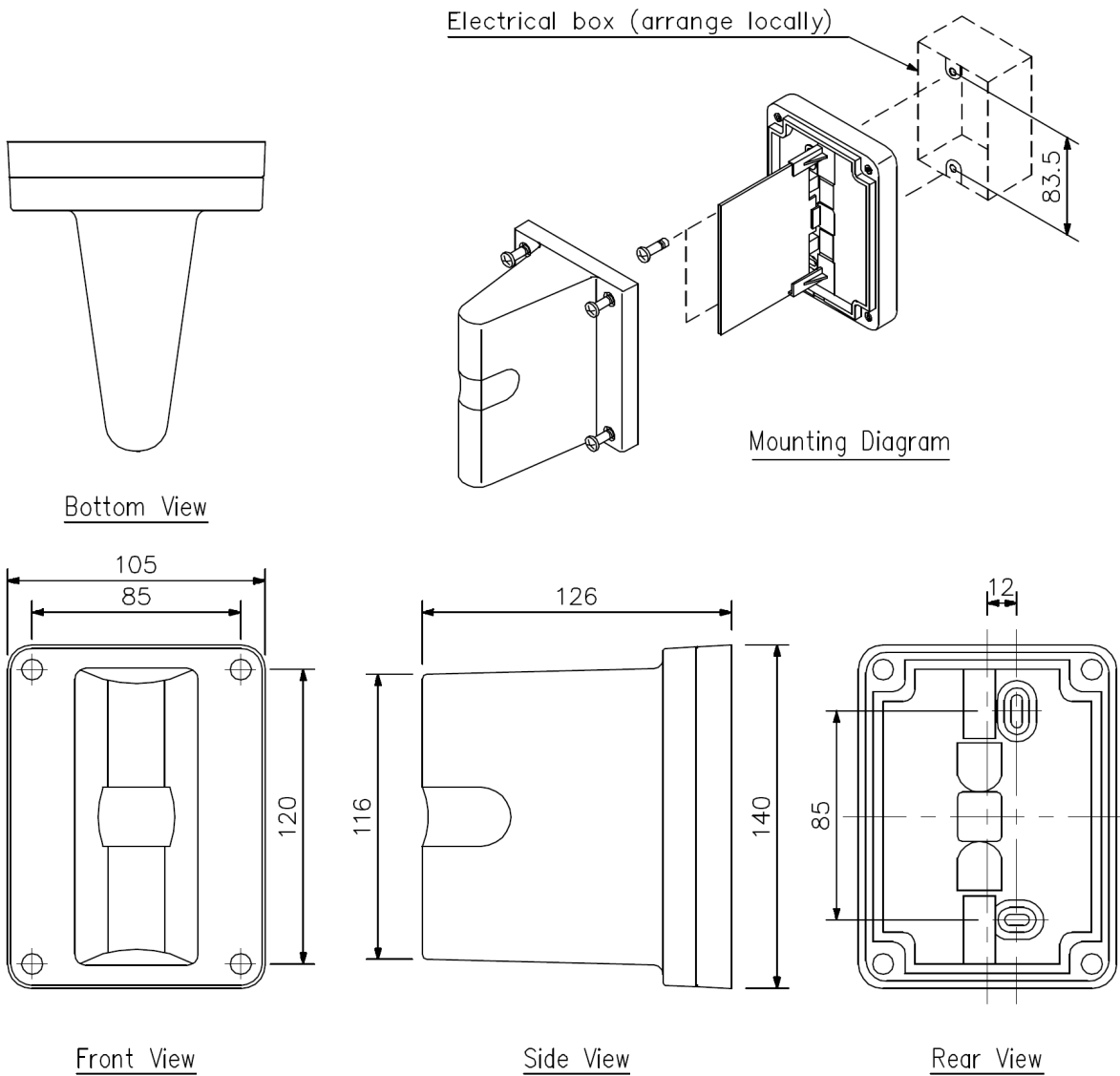
- Omnidirectional dipole antenna for wall or ceiling mounting
- By means of the integrated RF amplifier losses induced by long cable runs can be compensated

Specifications

Power Source	7 to 12 V DC (supplied from tuner)
Power Consumption	15 mA or less
Attenuator	0 / -10 / -20 dB (selectable)
Receiving Frequency	506 - 542 MHz, UHF
Recommended Cable Type	RG-6/U or RG-11/U
Dipole Ratio Relative Gain	8 dB
VSWR	3.0 or less
Output Impedance	75 Ω
Mounting Hole Pitch	83.5 mm (dimensions for wiring box)
Operating Temperature	-10 °C to +50 °C
Finish	AES resin, off-white
Dimensions	105 (W) × 140 (H) × 126 (D) mm (4.13" x 5.51" x 4.96")
Weight	270 g (0.6 lbs)
Included Accessories	M3.5 screw for wiring box x2 Tapping screw (M4) for wooden wall x2, RG-6/U or RG-11/U sleeve x1

Compatible with frequency bands M1, RM1 only Revised Frequency Specification 506 - 542 MHz.
No modification or update is required.

Dimensions



Bottom View

Mounting Diagram

Front View

Side View

Rear View

* Mounting holes are 12 mm out of the unit's center.

UNIT: mm

A&E specifications

The remote dipole antenna shall be suitable for use in the UHF frequency range of 506 - 542 MHz. The antenna gain shall be greater than 8 dB with a V. S. W. R. of less than 3. The output impedance shall be 75 ohm with an operating distance of 35 m (115 ft.) maximum using RG-6U cable or 50 m (164 ft.) maximum using RG-11U cable. The antenna power requirement shall be 7- 12 VDC with current consumption of less than 24 mA supplied from the wireless receiver or antenna distributor. The unit shall have a mounting hole pitch of 3.29" (83.5 mm). The operating temperature shall be -10° C to +50° C (+14° F to +122° F). Unit construction shall be AES resin, off-white with dimensions of 105 x 140 x 126 mm (4.13" x 5.51" x 4.96") and weight of 300 g (0.66 lbs.).